



# APPENDIX B: LAND USE DESIGNATION MAPS

The maps in this appendix illustrate general land use designations for all fifteen planning areas of the County as of March 2024. Parcel specific land use designation information, as well as implementing zoning information, Resources and Constraints Maps, and other informational maps are provided on the County Geographic Information System (GIS). Persons contemplating decisions about development proposals on a particular property, should consult the maps provided on the County GIS. The maps in this document are not designed to be used as references for planning decisions. For more information regarding General Plan maps, see Chapter 1: Introduction.

## GENERAL PLAN LAND USE DESIGNATIONS

Land Use Designation	General Plan Reference
<b>Residential</b>	
Mountain Residential Designation (R-MT)	Policy BE-2.2.2
Rural Residential Designation (R-R)	Policy BE-2.2.3
Suburban Residential Designation (R-S)	Policy BE-2.2.4
Urban Very Low Density Residential (R-UVL)	Policy BE-2.1.2
Urban Low Density Residential (R-UL)	Policy BE-2.1.3
Urban Medium Density Residential (R-UM)	Policy BE-2.1.4
Urban High Density Residential (R-UH)	Policy BE-2.1.5
Urban High Density Flex Residential (R-UHF)	Policy BE-2.1.6
<b>Commercial + Industrial</b>	
Neighborhood Commercial (C-N)	Policy BE-3.1.2
Community Commercial (C-C)	Policy BE-3.1.3
Professional and Administrative Offices (C-O)	Policy BE-3.1.4
Visitor Accommodations (C-V)	Policy BE-3.1.5



Land Use Designation	General Plan Reference
Service Commercial and Light Industrial (C-S)	Policy BE-3.1.6
Heavy Industrial (I)	Policy BE-3.1.7
<b>Open Space + Resources + Public Facilities</b>	
Urban Open Space (O-U)	Policy ARC-9.2.2
Parks, Recreation, and Open Space (O-R)	Policy PPF-1.2.1
Lakes, Reservoirs, and Lagoons (O-L)	Policy ARC-9.2.8
Resource Conservation Lands (O-C)	Policy ARC-9.2.6
Agriculture (AG)	Policy ARC-1.1.3
Public Facility/Institutional Designation (P)	Policy PPF-1.1.1

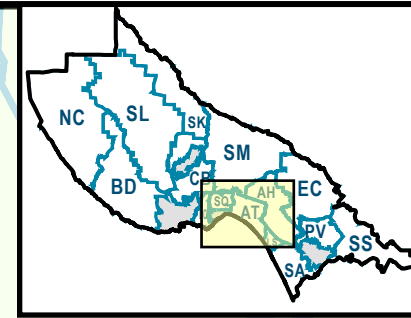
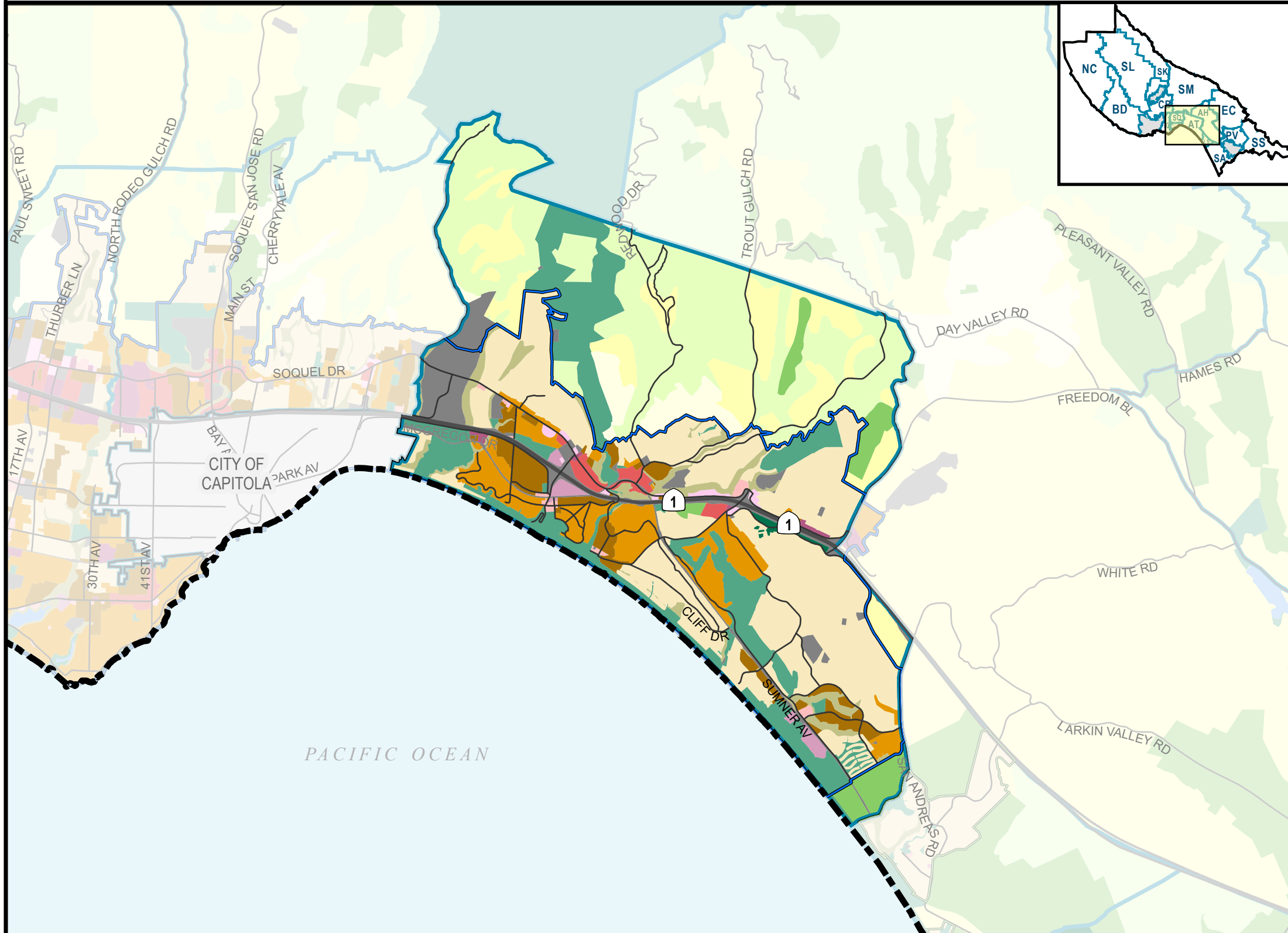
## LAND USE DESIGNATION MAPS BY PLANNING AREAS

B-3	Aptos (AT)	B-11	Pajaro Valley (PV)
B-4	Aptos Hills (AH)	B-12	Salsipuedes (SS)
B-5	Bonny Doon (BD)	B-13	San Andreas (SA)
B-6	Carbonera (CB)	B-14	San Lorenzo Valley (SL)
B-7	Eureka Canyon (EC)	B-15	Skyline (SK)
B-8	La Selva (LS)	B-16	Soquel (SQ)
B-9	Live Oak (LO)	B-17	Summit (SM)
B-10	North Coast (NC)		



# APTOS PLANNING AREA

## COUNTY OF SANTA CRUZ GENERAL PLAN LAND USE MAP



### General Plan Land Use Designations

#### Residential

- Mountain Residential (R-MT)
- Rural Residential (R-R)
- Suburban Residential (R-S)
- Urban Very Low Density Residential (R-UVL)
- Urban Low Density Residential (R-UL)
- Urban Medium Density Residential (R-UM)
- Urban High Density Residential (R-UH)
- Urban High Density Flex Residential (R-UHF)

#### Commercial and Industrial

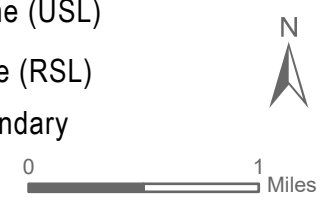
- Neighborhood Commercial (C-N)
- Community Commercial (C-C)
- Professional and Administrative Offices (C-O)
- Visitor Accommodations (C-V)
- Service Commercial and Light Industrial (C-S)
- Heavy Industrial (I)

#### Open Space and Resources

- Urban Open Space (O-U)
- Parks, Recreation, and Open Space (O-R)
- Lakes/Reservoirs/Lagoons (O-L)
- Resource Conservation (O-C)
- Agriculture (AG)

#### Other Designations and Boundaries

- Public Facility/Institutional (P)
- County Boundary
- City Boundary
- Urban Services Line (USL)
- Rural Services Line (RSL)
- Planning Area Boundary

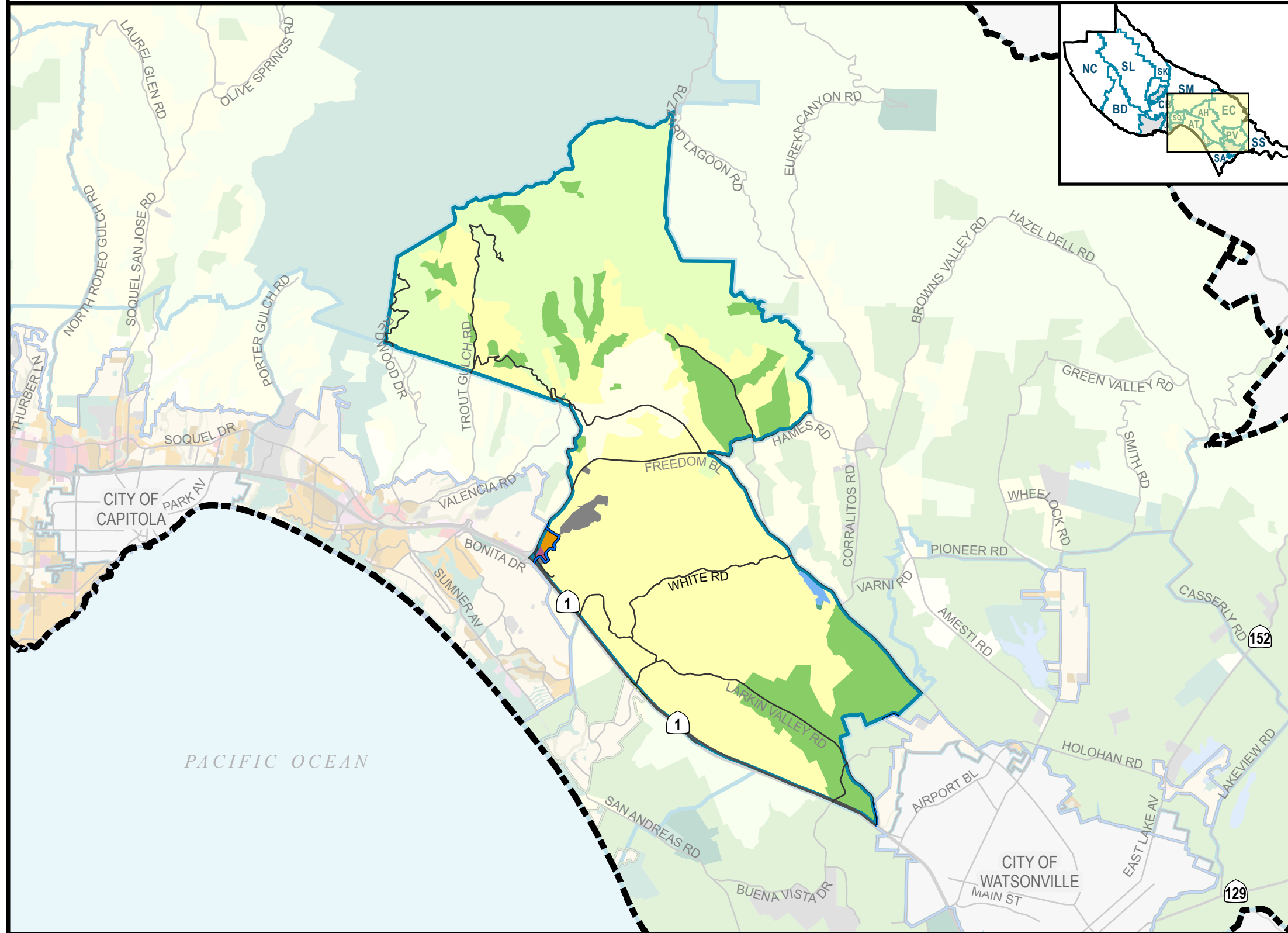


Source: Santa Cruz County. Please refer to the Santa Cruz County GISWeb for the latest data and maps available.



# APTOS HILLS PLANNING AREA

## COUNTY OF SANTA CRUZ GENERAL PLAN LAND USE MAP



### General Plan Land Use Designations

#### Residential

- Mountain Residential (R-MT)
- Rural Residential (R-R)
- Suburban Residential (R-S)
- Urban Very Low Density Residential (R-UVL)
- Urban Low Density Residential (R-UL)
- Urban Medium Density Residential (R-UM)
- Urban High Density Residential (R-UH)
- Urban High Density Flex Residential (R-UHF)

#### Commercial and Industrial

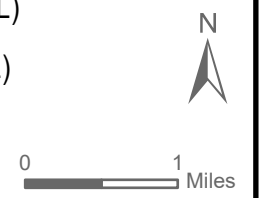
- Neighborhood Commercial (C-N)
- Community Commercial (C-C)
- Professional and Administrative Offices (C-O)
- Visitor Accommodations (C-V)
- Service Commercial and Light Industrial (C-S)
- Heavy Industrial (I)

#### Open Space and Resources

- Urban Open Space (O-U)
- Parks, Recreation, and Open Space (O-R)
- Lakes/Reservoirs/Lagoons (O-L)
- Resource Conservation (O-C)
- Agriculture (AG)

#### Other Designations and Boundaries

- Public Facility/Institutional (P)
- County Boundary
- City Boundary
- Urban Services Line (USL)
- Rural Services Line (RSL)
- Planning Area Boundary



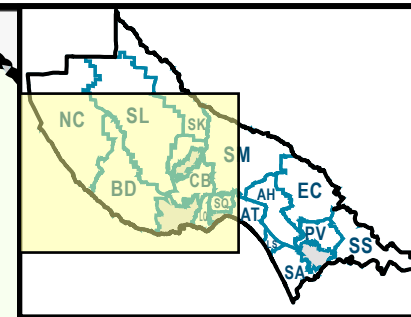
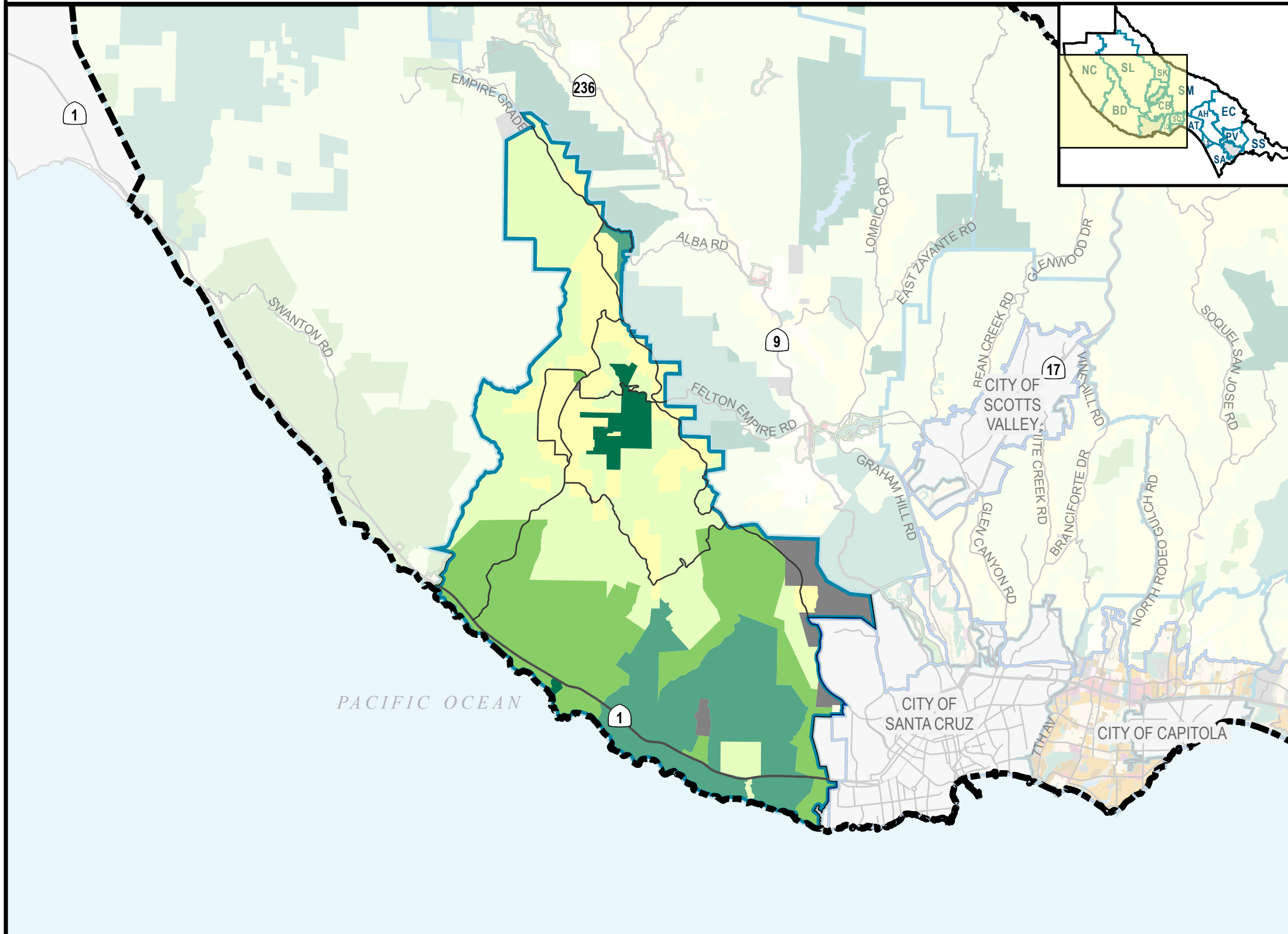
Source: Santa Cruz County. Please refer to the Santa Cruz County GISWeb for the latest data and maps available.





# BONNY DOON PLANNING AREA

## COUNTY OF SANTA CRUZ GENERAL PLAN LAND USE MAP



### General Plan Land Use Designations

#### Residential

- Mountain Residential (R-MT)
- Rural Residential (R-R)
- Suburban Residential (R-S)
- Urban Very Low Density Residential (R-UVL)
- Urban Low Density Residential (R-UL)
- Urban Medium Density Residential (R-UM)
- Urban High Density Residential (R-UH)
- Urban High Density Flex Residential (R-UHF)

#### Commercial and Industrial

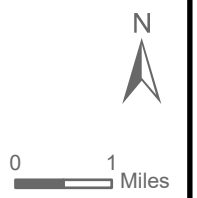
- Neighborhood Commercial (C-N)
- Community Commercial (C-C)
- Professional and Administrative Offices (C-O)
- Visitor Accommodations (C-V)
- Service Commercial and Light Industrial (C-S)
- Heavy Industrial (I)

#### Open Space and Resources

- Urban Open Space (O-U)
- Parks, Recreation, and Open Space (O-R)
- Lakes/Reservoirs/Lagoons (O-L)
- Resource Conservation (O-C)
- Agriculture (AG)

#### Other Designations and Boundaries

- Public Facility/Institutional (P)
- County Boundary
- City Boundary
- Urban Services Line (USL)
- Rural Services Line (RSL)
- Planning Area Boundary

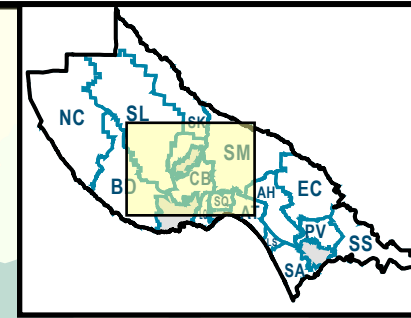
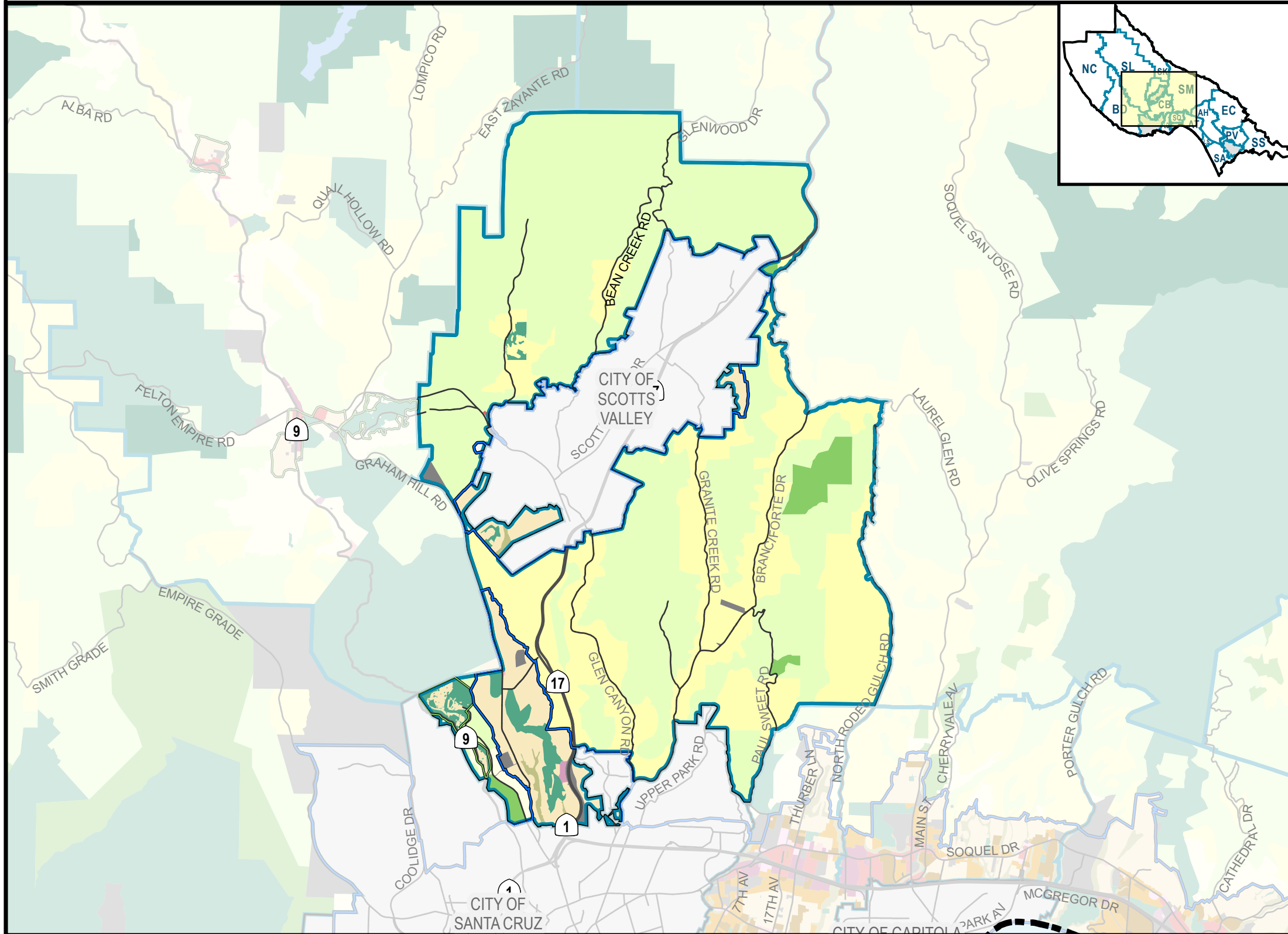


Source: Santa Cruz County. Please refer to the Santa Cruz County GISWeb for the latest data and maps available.



# CARBONERA PLANNING AREA

## COUNTY OF SANTA CRUZ GENERAL PLAN LAND USE MAP



### General Plan Land Use Designations

#### Residential

- Mountain Residential (R-MT)
- Rural Residential (R-R)
- Suburban Residential (R-S)
- Urban Very Low Density Residential (R-UVL)
- Urban Low Density Residential (R-UL)
- Urban Medium Density Residential (R-UM)
- Urban High Density Residential (R-UH)
- Urban High Density Flex Residential (R-UHF)

#### Commercial and Industrial

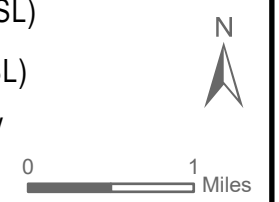
- Neighborhood Commercial (C-N)
- Community Commercial (C-C)
- Professional and Administrative Offices (C-O)
- Visitor Accommodations (C-V)
- Service Commercial and Light Industrial (C-S)
- Heavy Industrial (I)

#### Open Space and Resources

- Urban Open Space (O-U)
- Parks, Recreation, and Open Space (O-R)
- Lakes/Reservoirs/Lagoons (O-L)
- Resource Conservation (O-C)
- Agriculture (AG)

#### Other Designations and Boundaries

- Public Facility/Institutional (P)
- County Boundary
- City Boundary
- Urban Services Line (USL)
- Rural Services Line (RSL)
- Planning Area Boundary

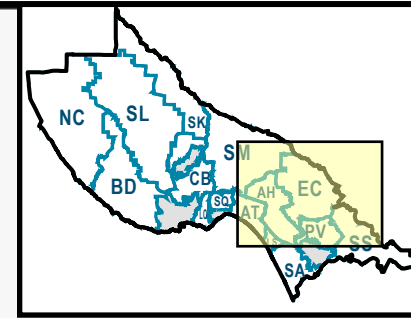
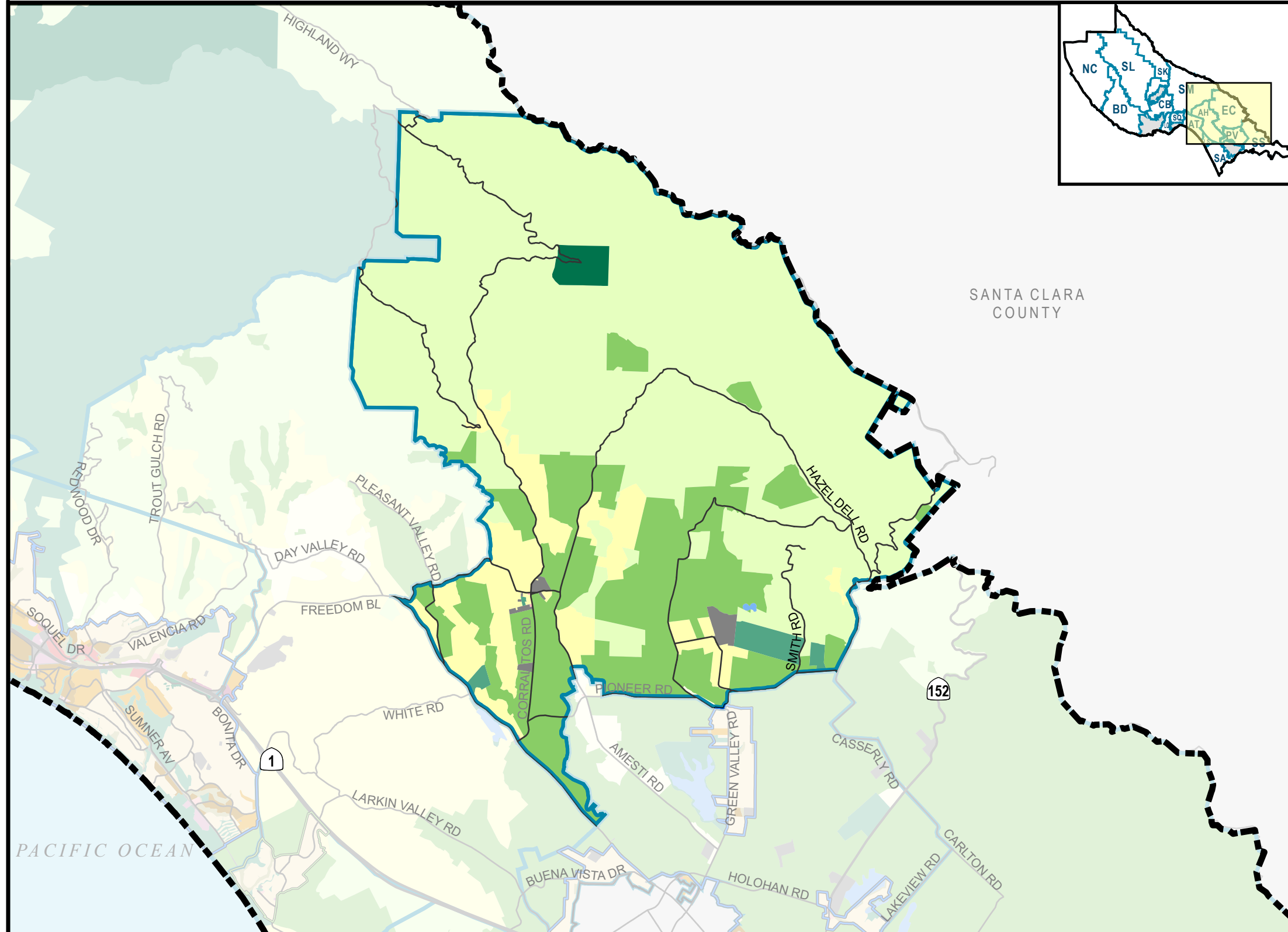


Source: Santa Cruz County. Please refer to the Santa Cruz County GISWeb for the latest data and maps available.



# EUREKA CANYON PLANNING AREA

## COUNTY OF SANTA CRUZ GENERAL PLAN LAND USE MAP



### General Plan Land Use Designations

#### Residential

- Mountain Residential (R-MT)
- Rural Residential (R-R)
- Suburban Residential (R-S)
- Urban Very Low Density Residential (R-UVL)
- Urban Low Density Residential (R-UL)
- Urban Medium Density Residential (R-UM)
- Urban High Density Residential (R-UH)
- Urban High Density Flex Residential (R-UHF)

#### Commercial and Industrial

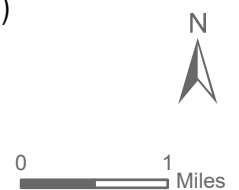
- Neighborhood Commercial (C-N)
- Community Commercial (C-C)
- Professional and Administrative Offices (C-O)
- Visitor Accommodations (C-V)
- Service Commercial and Light Industrial (C-S)
- Heavy Industrial (I)

#### Open Space and Resources

- Urban Open Space (O-U)
- Parks, Recreation, and Open Space (O-R)
- Lakes/Reservoirs/Lagoons (O-L)
- Resource Conservation (O-C)
- Agriculture (AG)

#### Other Designations and Boundaries

- Public Facility/Institutional (P)
- County Boundary
- City Boundary
- Urban Services Line (USL)
- Rural Services Line (RSL)
- Planning Area Boundary



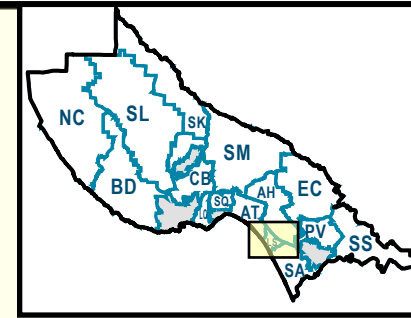
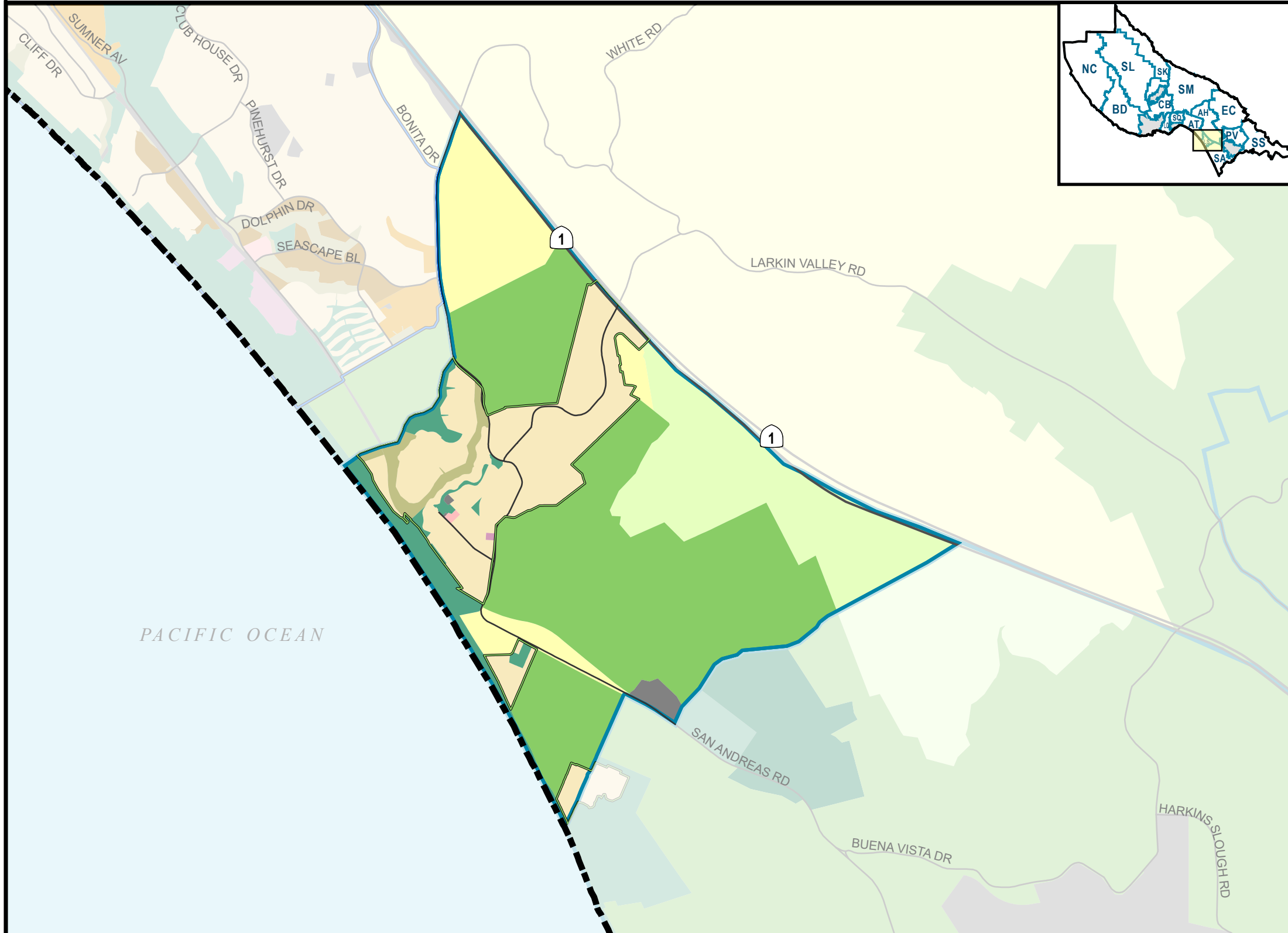
Source: Santa Cruz County. Please refer to the Santa Cruz County GISWeb for the latest data and maps available.





# LA SELVA PLANNING AREA

## COUNTY OF SANTA CRUZ GENERAL PLAN LAND USE MAP



### General Plan Land Use Designations

#### Residential

- Mountain Residential (R-MT)
- Rural Residential (R-R)
- Suburban Residential (R-S)
- Urban Very Low Density Residential (R-UVL)
- Urban Low Density Residential (R-UL)
- Urban Medium Density Residential (R-UM)
- Urban High Density Residential (R-UH)
- Urban High Density Flex Residential (R-UHF)

#### Commercial and Industrial

- Neighborhood Commercial (C-N)
- Community Commercial (C-C)
- Professional and Administrative Offices (C-O)
- Visitor Accommodations (C-V)
- Service Commercial and Light Industrial (C-S)
- Heavy Industrial (I)

#### Open Space and Resources

- Urban Open Space (O-U)
- Parks, Recreation, and Open Space (O-R)
- Lakes/Reservoirs/Lagoons (O-L)
- Resource Conservation (O-C)
- Agriculture (AG)

#### Other Designations and Boundaries

- Public Facility/Institutional (P)
- County Boundary
- City Boundary
- Urban Services Line (USL)
- Rural Services Line (RSL)
- Planning Area Boundary



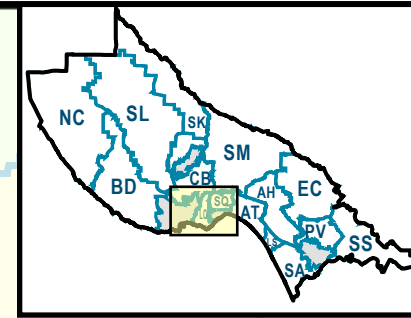
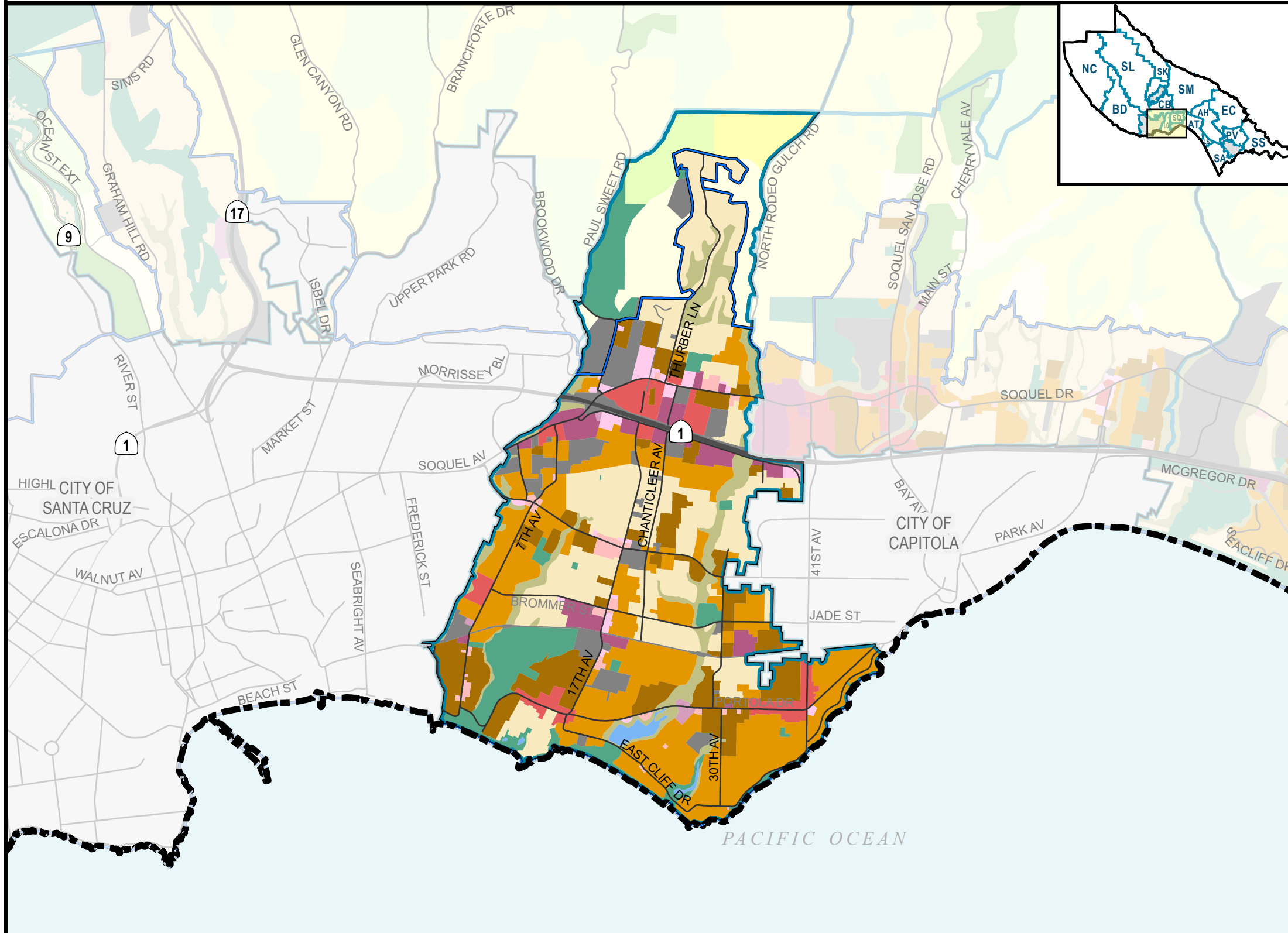
Source: Santa Cruz County. Please refer to the Santa Cruz County GISWeb for the latest data and maps available.





# LIVE OAK PLANNING AREA

## COUNTY OF SANTA CRUZ GENERAL PLAN LAND USE MAP



### General Plan Land Use Designations

- Residential**
- Mountain Residential (R-MT)
  - Rural Residential (R-R)
  - Suburban Residential (R-S)
  - Urban Very Low Density Residential (R-UVL)
  - Urban Low Density Residential (R-UL)
  - Urban Medium Density Residential (R-UM)
  - Urban High Density Residential (R-UH)
  - Urban High Density Flex Residential (R-UHF)
- Commercial and Industrial**
- Neighborhood Commercial (C-N)
  - Community Commercial (C-C)
  - Professional and Administrative Offices (C-O)
  - Visitor Accommodations (C-V)
  - Service Commercial and Light Industrial (C-S)
  - Heavy Industrial (I)
- Open Space and Resources**
- Urban Open Space (O-U)
  - Parks, Recreation, and Open Space (O-R)
  - Lakes/Reservoirs/Lagoons (O-L)
  - Resource Conservation (O-C)
  - Agriculture (AG)
- Other Designations and Boundaries**
- Public Facility/Institutional (P)
  - County Boundary
  - City Boundary
  - Urban Services Line (USL)
  - Rural Services Line (RSL)
  - Planning Area Boundary

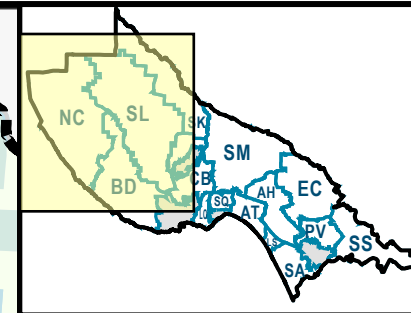
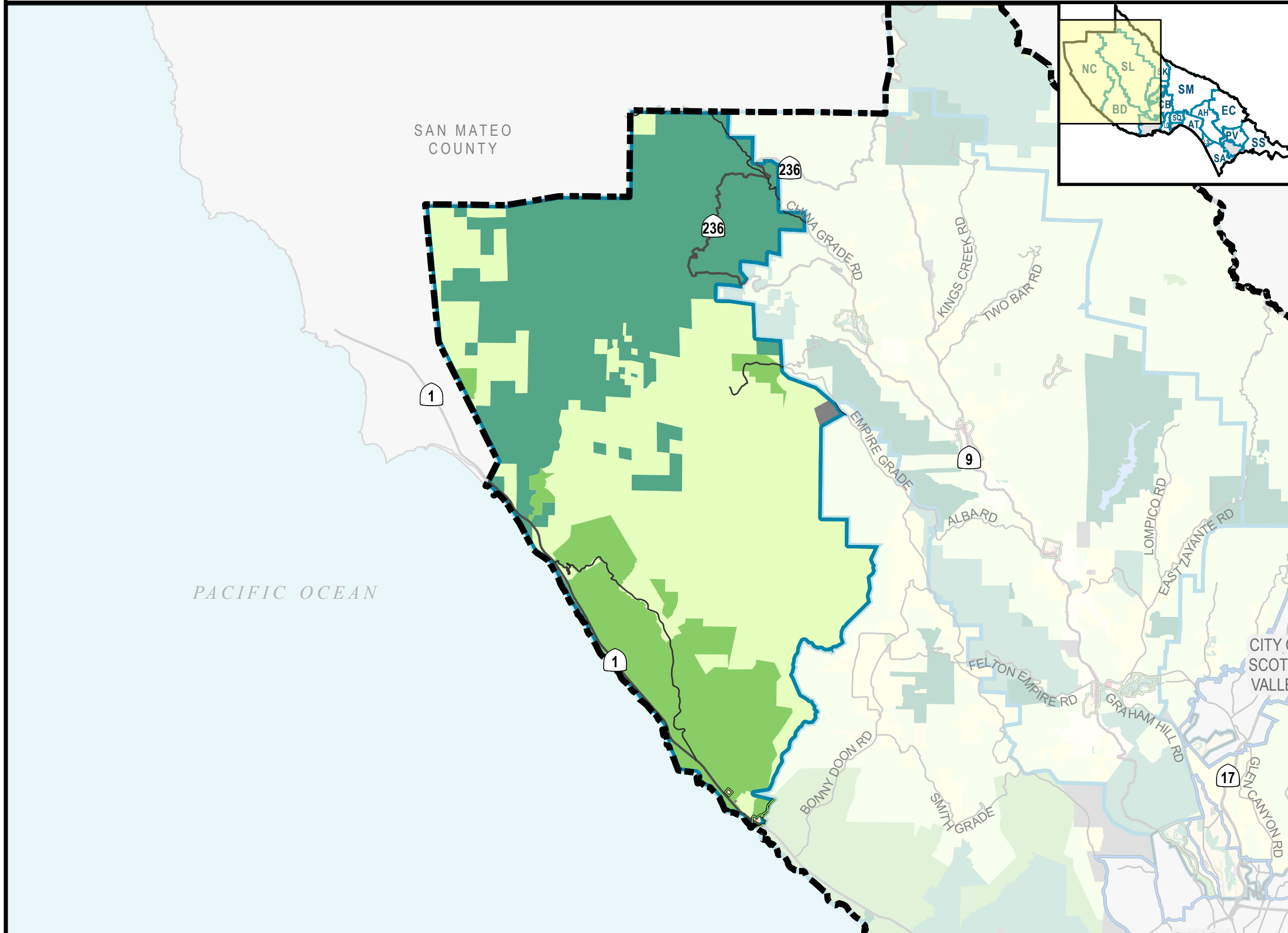


Source: Santa Cruz County. Please refer to the Santa Cruz County GISWeb for the latest data and maps available.



# NORTH COAST PLANNING AREA

## COUNTY OF SANTA CRUZ GENERAL PLAN LAND USE MAP



### General Plan Land Use Designations

#### Residential

- Mountain Residential (R-MT)
- Rural Residential (R-R)
- Suburban Residential (R-S)
- Urban Very Low Density Residential (R-UVL)
- Urban Low Density Residential (R-UL)
- Urban Medium Density Residential (R-UM)
- Urban High Density Residential (R-UH)
- Urban High Density Flex Residential (R-UHF)

#### Commercial and Industrial

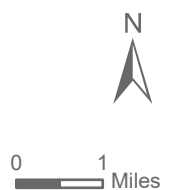
- Neighborhood Commercial (C-N)
- Community Commercial (C-C)
- Professional and Administrative Offices (C-O)
- Visitor Accommodations (C-V)
- Service Commercial and Light Industrial (C-S)
- Heavy Industrial (I)

#### Open Space and Resources

- Urban Open Space (O-U)
- Parks, Recreation, and Open Space (O-R)
- Lakes/Reservoirs/Lagoons (O-L)
- Resource Conservation (O-C)
- Agriculture (AG)

#### Other Designations and Boundaries

- Public Facility/Institutional (P)
- County Boundary
- City Boundary
- Urban Services Line (USL)
- Rural Services Line (RSL)
- Planning Area Boundary

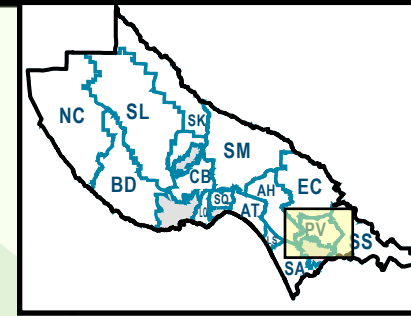
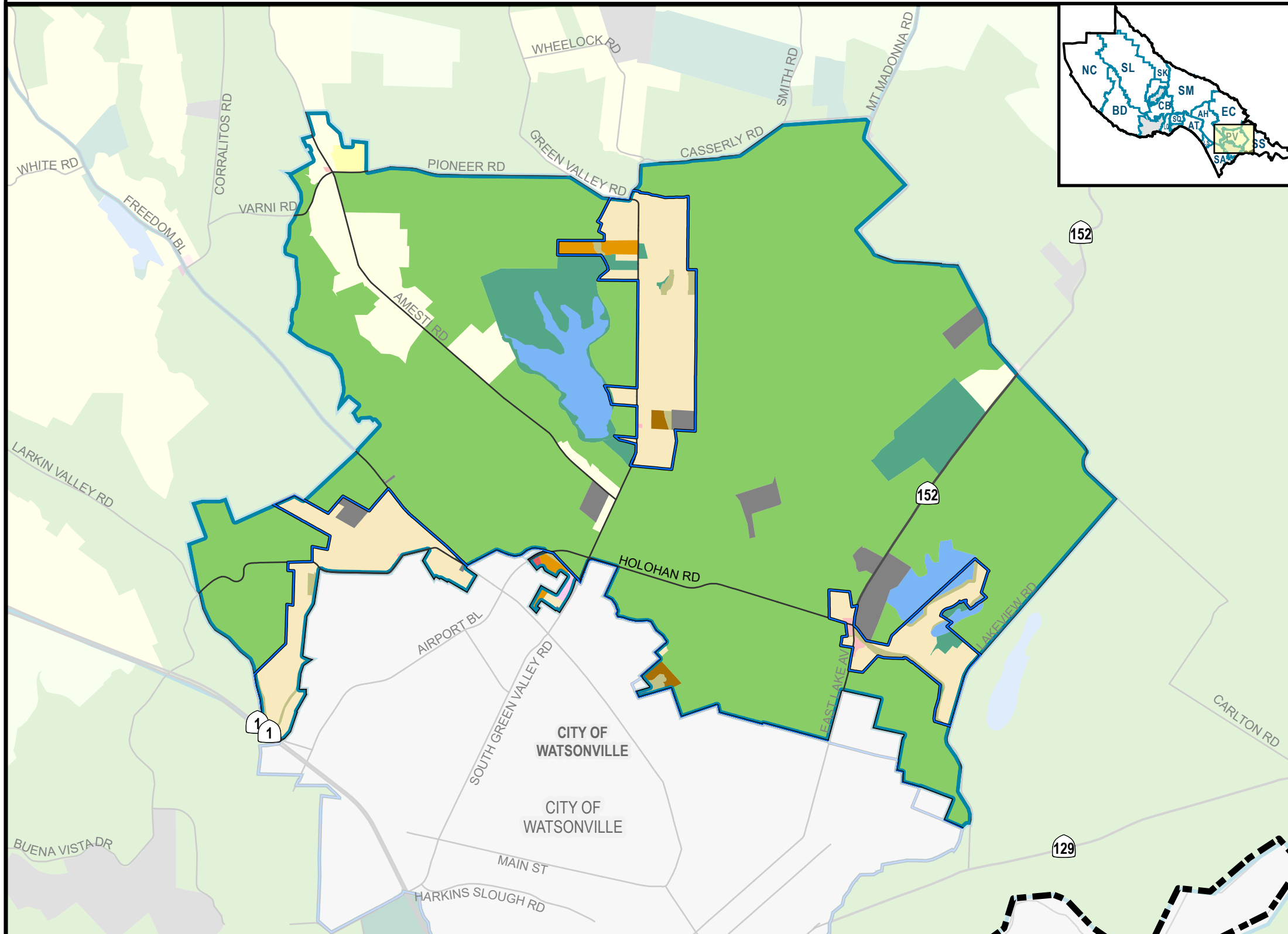


Source: Santa Cruz County. Please refer to the Santa Cruz County GISWeb for the latest data and maps available.



# PAJARO VALLEY PLANNING AREA

## COUNTY OF SANTA CRUZ GENERAL PLAN LAND USE MAP



### General Plan Land Use Designations

#### Residential

- Mountain Residential (R-MT)
- Rural Residential (R-R)
- Suburban Residential (R-S)
- Urban Very Low Density Residential (R-UVL)
- Urban Low Density Residential (R-UL)
- Urban Medium Density Residential (R-UM)
- Urban High Density Residential (R-UH)
- Urban High Density Flex Residential (R-UHF)

#### Commercial and Industrial

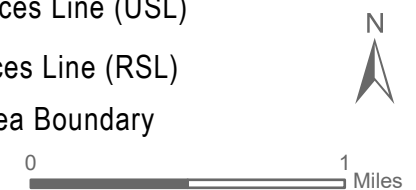
- Neighborhood Commercial (C-N)
- Community Commercial (C-C)
- Professional and Administrative Offices (C-O)
- Visitor Accommodations (C-V)
- Service Commercial and Light Industrial (C-S)
- Heavy Industrial (I)

#### Open Space and Resources

- Urban Open Space (O-U)
- Parks, Recreation, and Open Space (O-R)
- Lakes/Reservoirs/Lagoons (O-L)
- Resource Conservation (O-C)
- Agriculture (AG)

#### Other Designations and Boundaries

- Public Facility/Institutional (P)
- County Boundary
- City Boundary
- Urban Services Line (USL)
- Rural Services Line (RSL)
- Planning Area Boundary



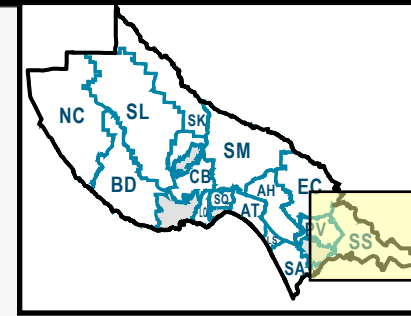
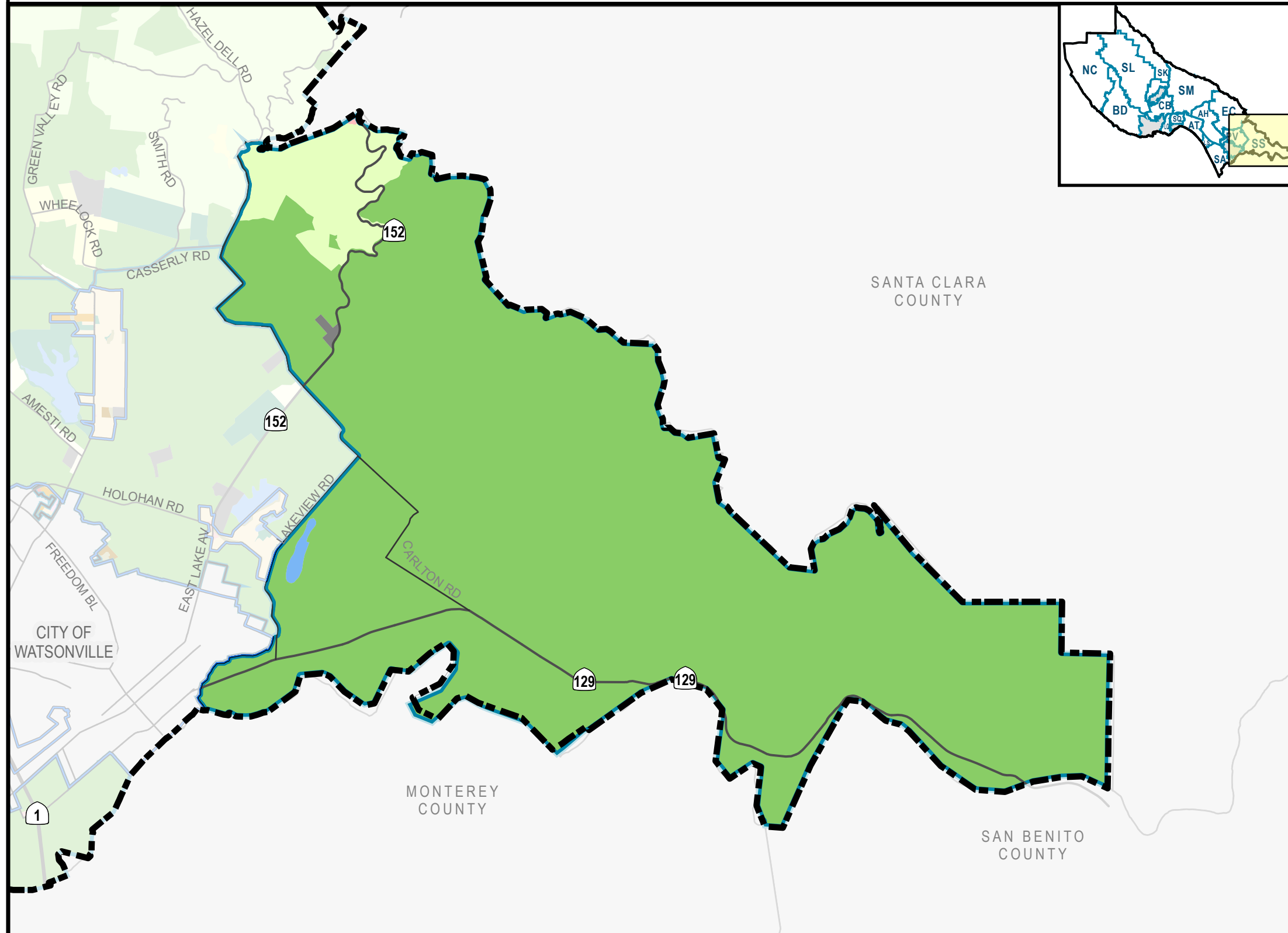
Source: Santa Cruz County. Please refer to the Santa Cruz County GISWeb for the latest data and maps available.





# SALSIPUEDES PLANNING AREA

## COUNTY OF SANTA CRUZ GENERAL PLAN LAND USE MAP



### General Plan Land Use Designations

#### Residential

- Mountain Residential (R-MT)
- Rural Residential (R-R)
- Suburban Residential (R-S)
- Urban Very Low Density Residential (R-UVL)
- Urban Low Density Residential (R-UL)
- Urban Medium Density Residential (R-UM)
- Urban High Density Residential (R-UH)
- Urban High Density Flex Residential (R-UHF)

#### Commercial and Industrial

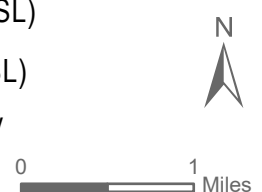
- Neighborhood Commercial (C-N)
- Community Commercial (C-C)
- Professional and Administrative Offices (C-O)
- Visitor Accommodations (C-V)
- Service Commercial and Light Industrial (C-S)
- Heavy Industrial (I)

#### Open Space and Resources

- Urban Open Space (O-U)
- Parks, Recreation, and Open Space (O-R)
- Lakes/Reservoirs/Lagoons (O-L)
- Resource Conservation (O-C)
- Agriculture (AG)

#### Other Designations and Boundaries

- Public Facility/Institutional (P)
- County Boundary
- City Boundary
- Urban Services Line (USL)
- Rural Services Line (RSL)
- Planning Area Boundary



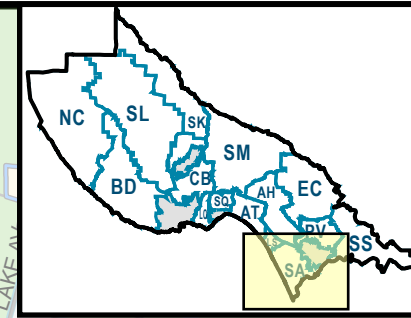
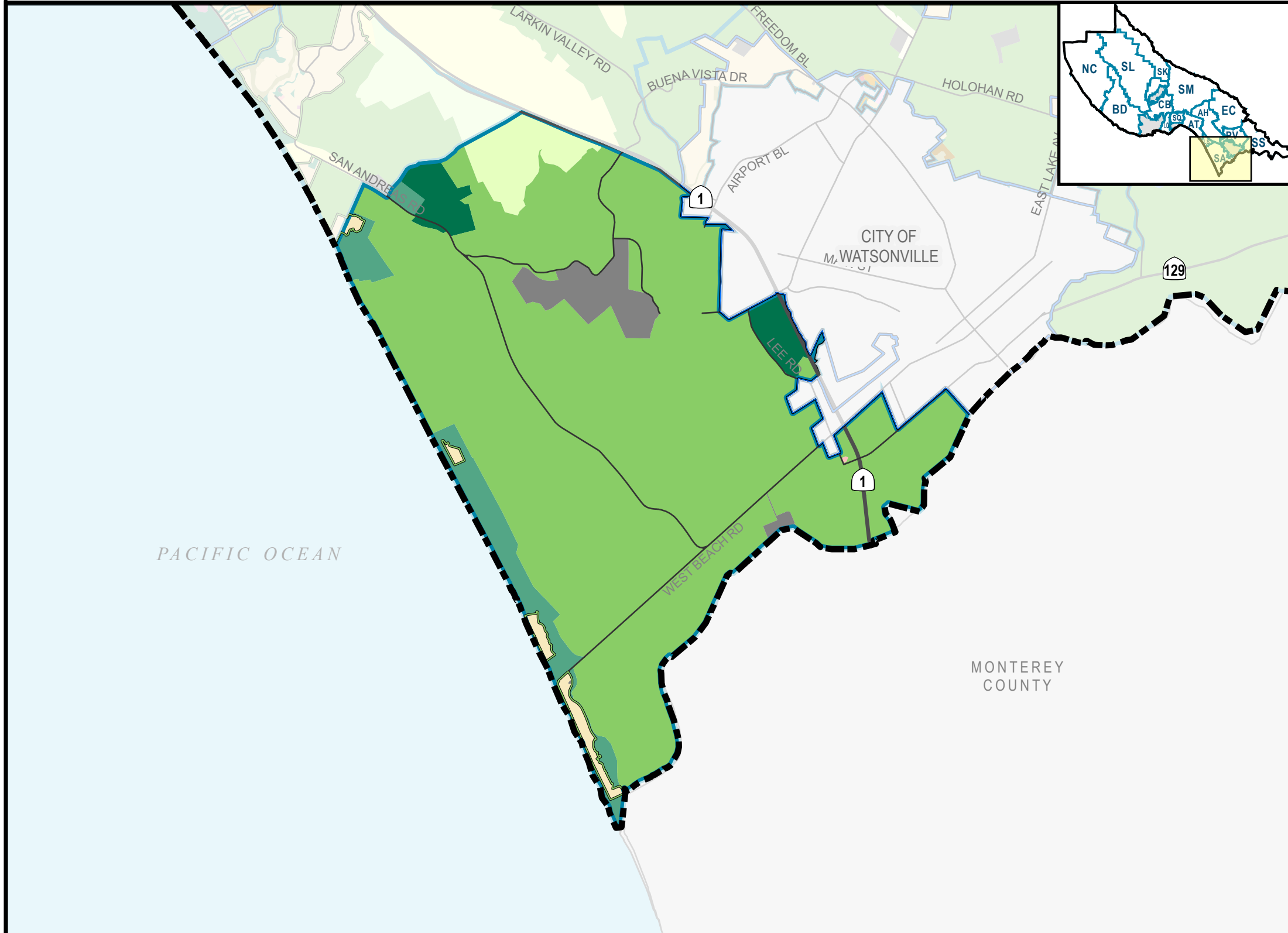
Source: Santa Cruz County. Please refer to the Santa Cruz County GISWeb for the latest data and maps available.





# SAN ANDREAS PLANNING AREA

## COUNTY OF SANTA CRUZ GENERAL PLAN LAND USE MAP



### General Plan Land Use Designations

#### Residential

- Mountain Residential (R-MT)
- Rural Residential (R-R)
- Suburban Residential (R-S)
- Urban Very Low Density Residential (R-UVL)
- Urban Low Density Residential (R-UL)
- Urban Medium Density Residential (R-UM)
- Urban High Density Residential (R-UH)
- Urban High Density Flex Residential (R-UHF)

#### Commercial and Industrial

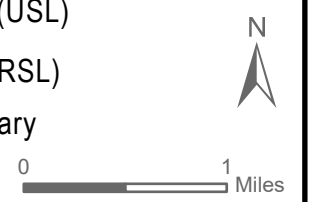
- Neighborhood Commercial (C-N)
- Community Commercial (C-C)
- Professional and Administrative Offices (C-O)
- Visitor Accommodations (C-V)
- Service Commercial and Light Industrial (C-S)
- Heavy Industrial (I)

#### Open Space and Resources

- Urban Open Space (O-U)
- Parks, Recreation, and Open Space (O-R)
- Lakes/Reservoirs/Lagoons (O-L)
- Resource Conservation (O-C)
- Agriculture (AG)

#### Other Designations and Boundaries

- Public Facility/Institutional (P)
- County Boundary
- City Boundary
- Urban Services Line (USL)
- Rural Services Line (RSL)
- Planning Area Boundary

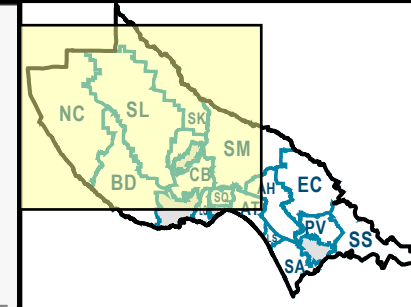
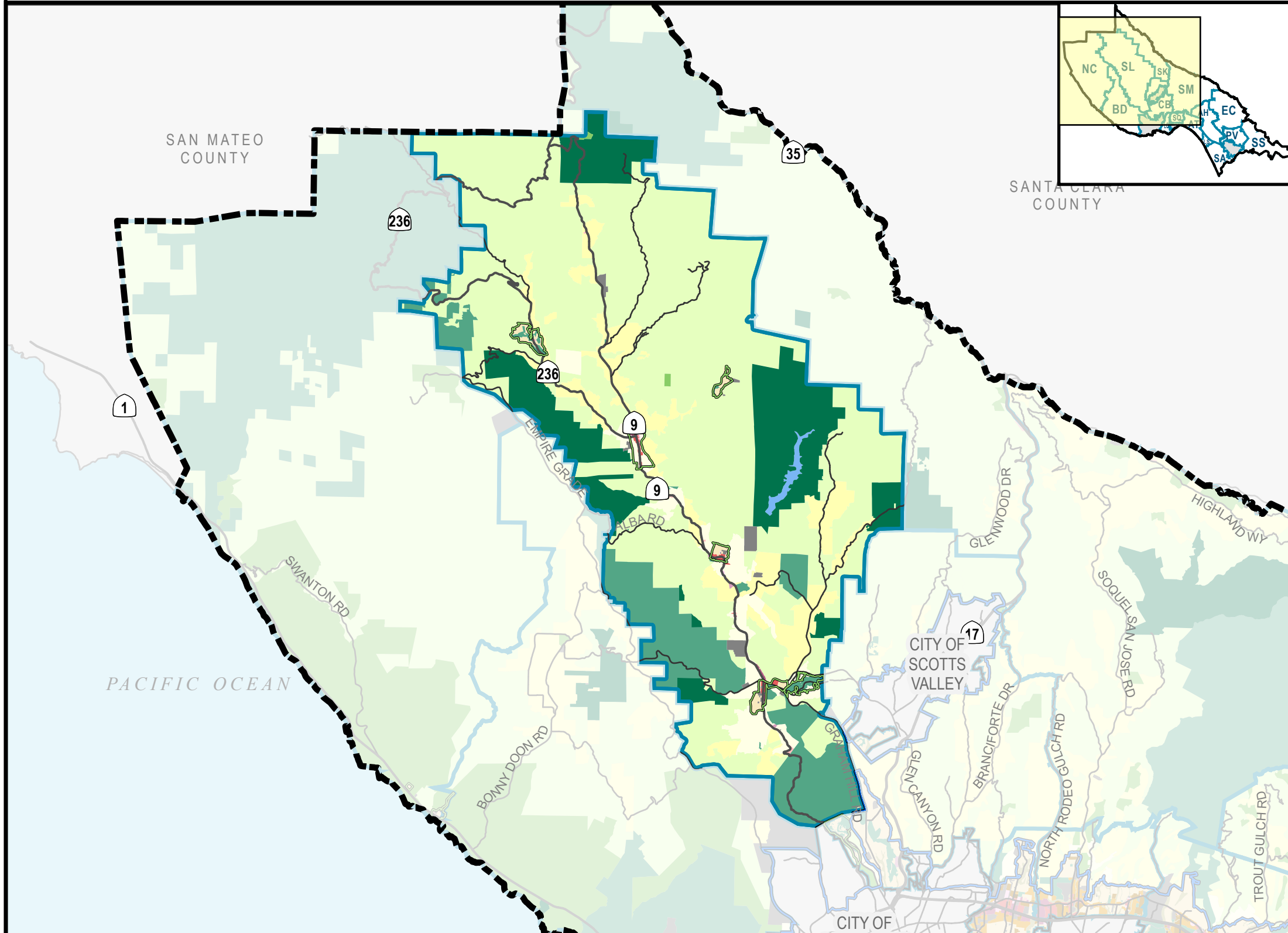


Source: Santa Cruz County. Please refer to the Santa Cruz County GISWeb for the latest data and maps available.



# SAN LORENZO VALLEY PLANNING AREA

## COUNTY OF SANTA CRUZ GENERAL PLAN LAND USE MAP



### General Plan Land Use Designations

#### Residential

- Mountain Residential (R-MT)
- Rural Residential (R-R)
- Suburban Residential (R-S)
- Urban Very Low Density Residential (R-UVL)
- Urban Low Density Residential (R-UL)
- Urban Medium Density Residential (R-UM)
- Urban High Density Residential (R-UH)
- Urban High Density Flex Residential (R-UHF)

#### Commercial and Industrial

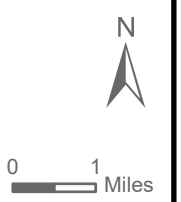
- Neighborhood Commercial (C-N)
- Community Commercial (C-C)
- Professional and Administrative Offices (C-O)
- Visitor Accommodations (C-V)
- Service Commercial and Light Industrial (C-S)
- Heavy Industrial (I)

#### Open Space and Resources

- Urban Open Space (O-U)
- Parks, Recreation, and Open Space (O-R)
- Lakes/Reservoirs/Lagoons (O-L)
- Resource Conservation (O-C)
- Agriculture (AG)

#### Other Designations and Boundaries

- Public Facility/Institutional (P)
- County Boundary
- City Boundary
- Urban Services Line (USL)
- Rural Services Line (RSL)
- Planning Area Boundary

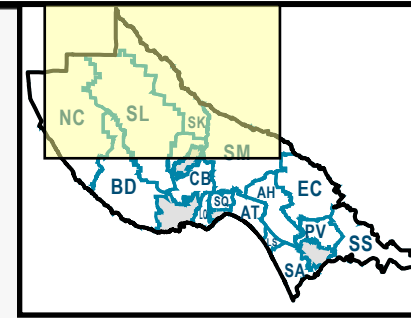
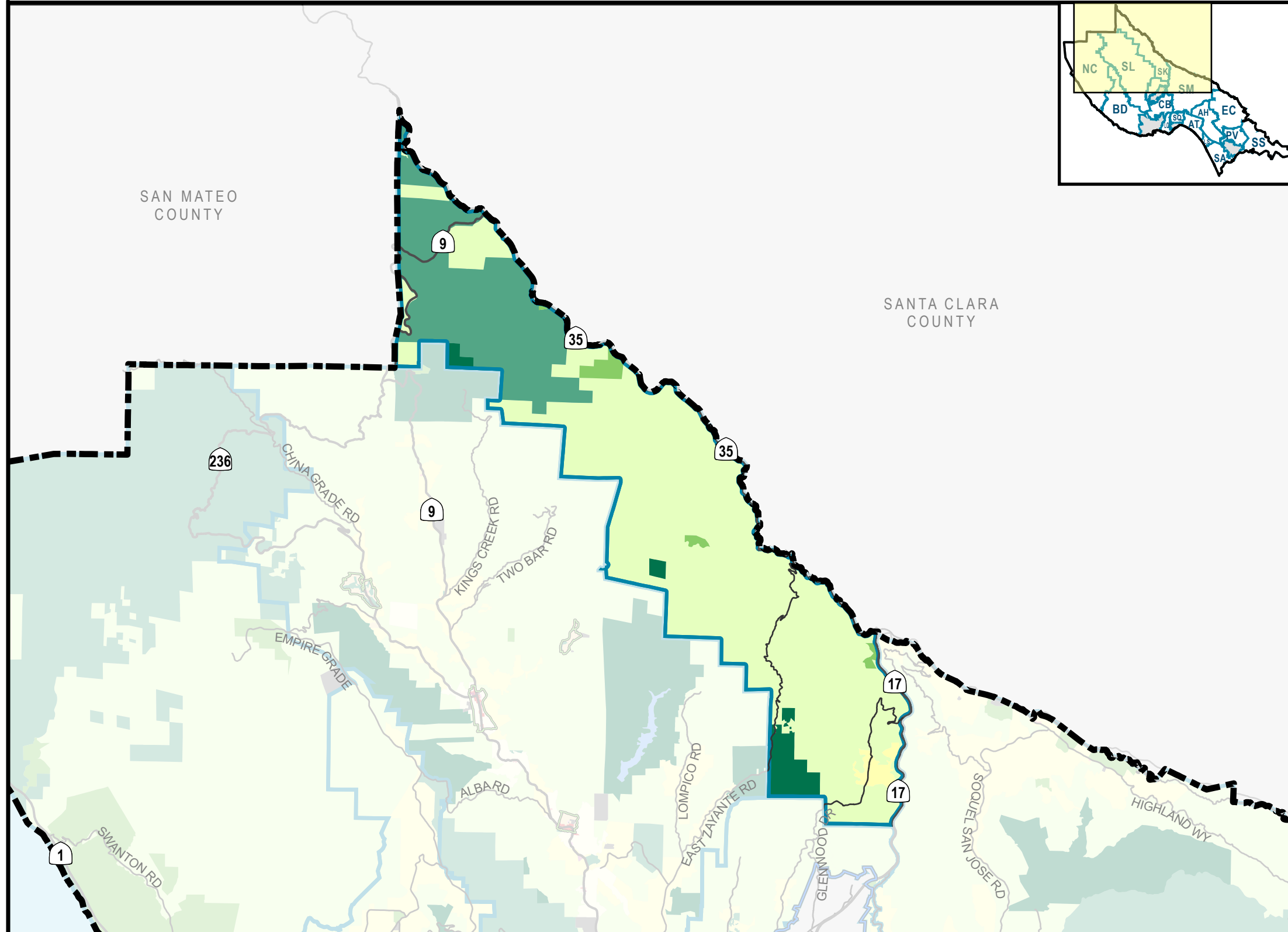


Source: Santa Cruz County. Please refer to the Santa Cruz County GISWeb for the latest data and maps available.



# SKYLINE PLANNING AREA

## COUNTY OF SANTA CRUZ GENERAL PLAN LAND USE MAP



### General Plan Land Use Designations

#### Residential

- Mountain Residential (R-MT)
- Rural Residential (R-R)
- Suburban Residential (R-S)
- Urban Very Low Density Residential (R-UVL)
- Urban Low Density Residential (R-UL)
- Urban Medium Density Residential (R-UM)
- Urban High Density Residential (R-UH)
- Urban High Density Flex Residential (R-UHF)

#### Commercial and Industrial

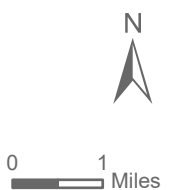
- Neighborhood Commercial (C-N)
- Community Commercial (C-C)
- Professional and Administrative Offices (C-O)
- Visitor Accommodations (C-V)
- Service Commercial and Light Industrial (C-S)
- Heavy Industrial (I)

#### Open Space and Resources

- Urban Open Space (O-U)
- Parks, Recreation, and Open Space (O-R)
- Lakes/Reservoirs/Lagoons (O-L)
- Resource Conservation (O-C)
- Agriculture (AG)

#### Other Designations and Boundaries

- Public Facility/Institutional (P)
- County Boundary
- City Boundary
- Urban Services Line (USL)
- Rural Services Line (RSL)
- Planning Area Boundary

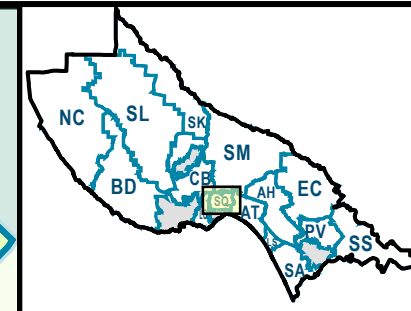
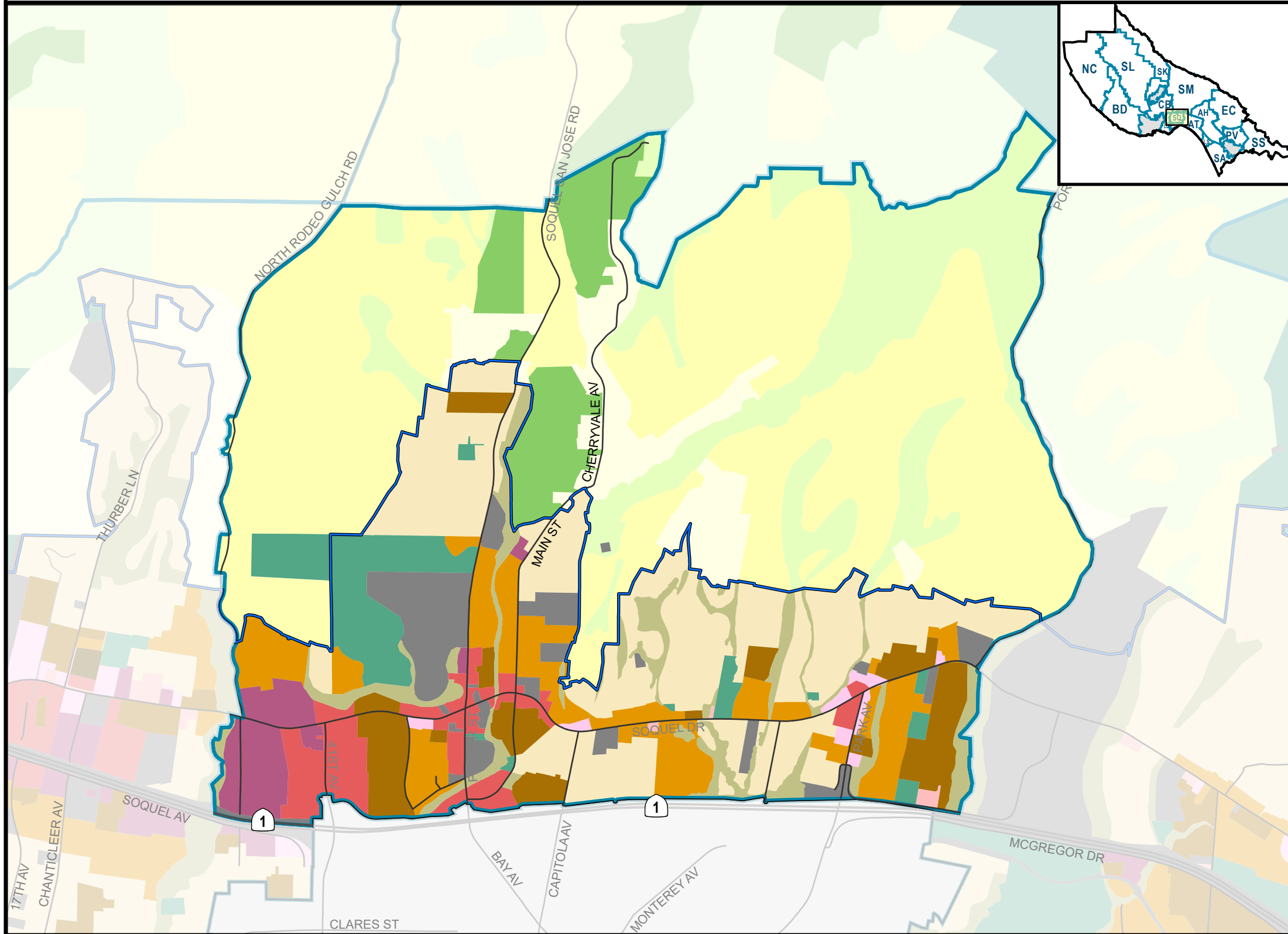


Source: Santa Cruz County. Please refer to the Santa Cruz County GISWeb for the latest data and maps available.



# SOQUEL PLANNING AREA

## COUNTY OF SANTA CRUZ GENERAL PLAN LAND USE MAP



### General Plan Land Use Designations

#### Residential

- Mountain Residential (R-MT)
- Rural Residential (R-R)
- Suburban Residential (R-S)
- Urban Very Low Density Residential (R-UVL)
- Urban Low Density Residential (R-UL)
- Urban Medium Density Residential (R-UM)
- Urban High Density Residential (R-UH)
- Urban High Density Flex Residential (R-UHF)

#### Commercial and Industrial

- Neighborhood Commercial (C-N)
- Community Commercial (C-C)
- Professional and Administrative Offices (C-O)
- Visitor Accommodations (C-V)
- Service Commercial and Light Industrial (C-S)
- Heavy Industrial (I)

#### Open Space and Resources

- Urban Open Space (O-U)
- Parks, Recreation, and Open Space (O-R)
- Lakes/Reservoirs/Lagoons (O-L)
- Resource Conservation (O-C)
- Agriculture (AG)

#### Other Designations and Boundaries

- Public Facility/Institutional (P)
- County Boundary
- City Boundary
- Urban Services Line (USL)
- Rural Services Line (RSL)
- Planning Area Boundary



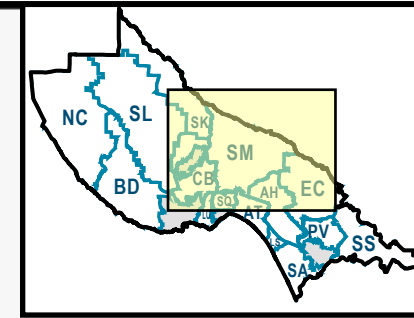
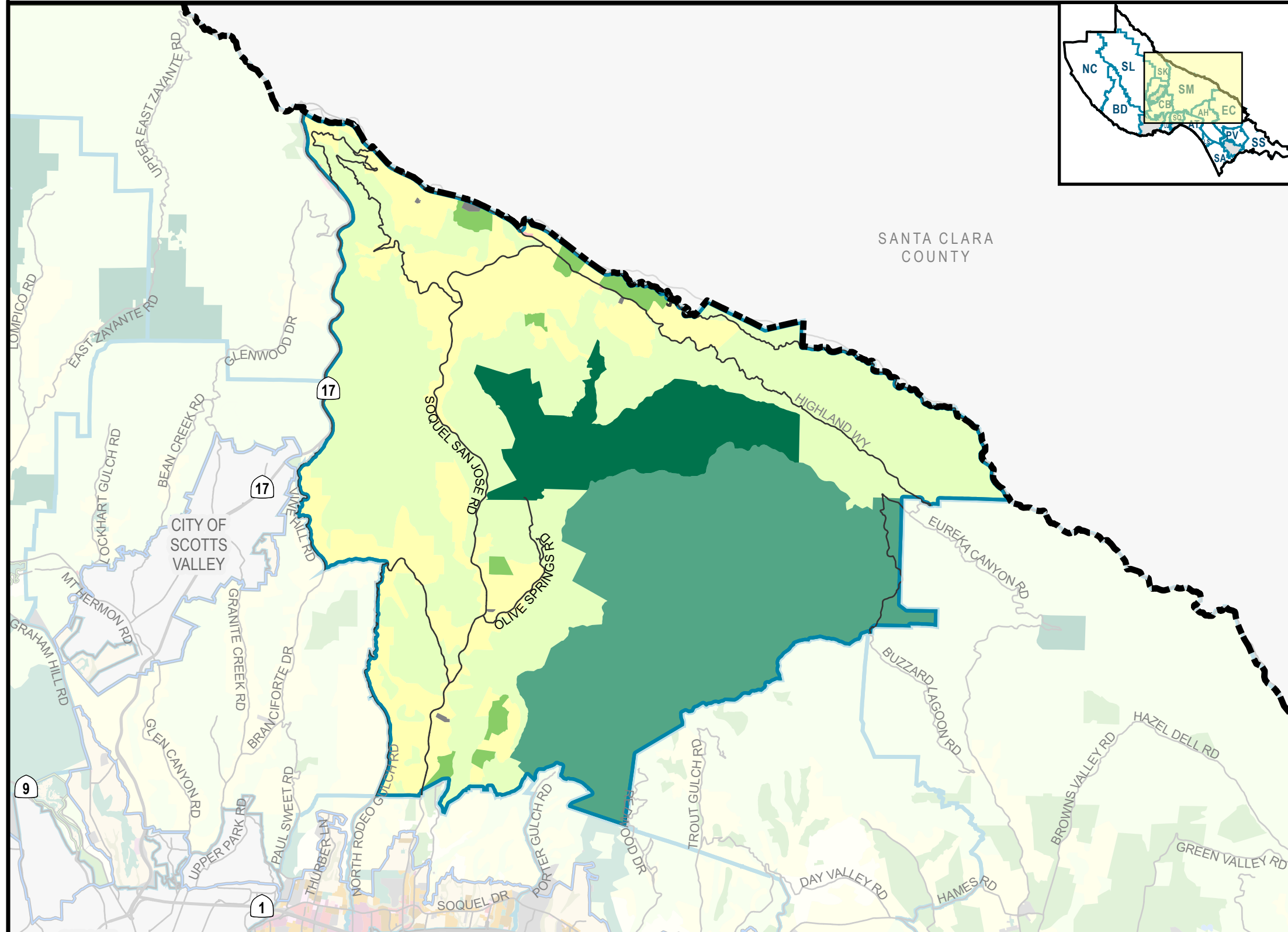
Source: Santa Cruz County. Please refer to the Santa Cruz County GISWeb for the latest data and maps available.





# SUMMIT PLANNING AREA

## COUNTY OF SANTA CRUZ GENERAL PLAN LAND USE MAP



### General Plan Land Use Designations

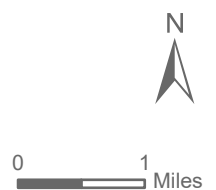
- Residential**
- Mountain Residential (R-MT)
  - Rural Residential (R-R)
  - Suburban Residential (R-S)
  - Urban Very Low Density Residential (R-UVL)
  - Urban Low Density Residential (R-UL)
  - Urban Medium Density Residential (R-UM)
  - Urban High Density Residential (R-UH)
  - Urban High Density Flex Residential (R-UHF)

- Commercial and Industrial**
- Neighborhood Commercial (C-N)
  - Community Commercial (C-C)
  - Professional and Administrative Offices (C-O)
  - Visitor Accommodations (C-V)
  - Service Commercial and Light Industrial (C-S)
  - Heavy Industrial (I)

- Open Space and Resources**
- Urban Open Space (O-U)
  - Parks, Recreation, and Open Space (O-R)
  - Lakes/Reservoirs/Lagoons (O-L)
  - Resource Conservation (O-C)
  - Agriculture (AG)

### Other Designations and Boundaries

- Public Facility/Institutional (P)
- County Boundary
- City Boundary
- Urban Services Line (USL)
- Rural Services Line (RSL)
- Planning Area Boundary



Source: Santa Cruz County. Please refer to the Santa Cruz County GISWeb for the latest data and maps available.